

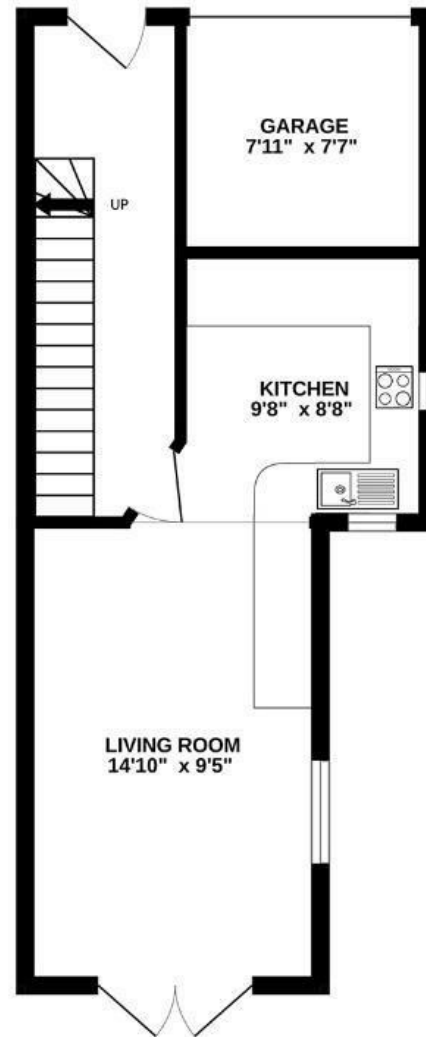
Coach House Lane

ST GEORGE

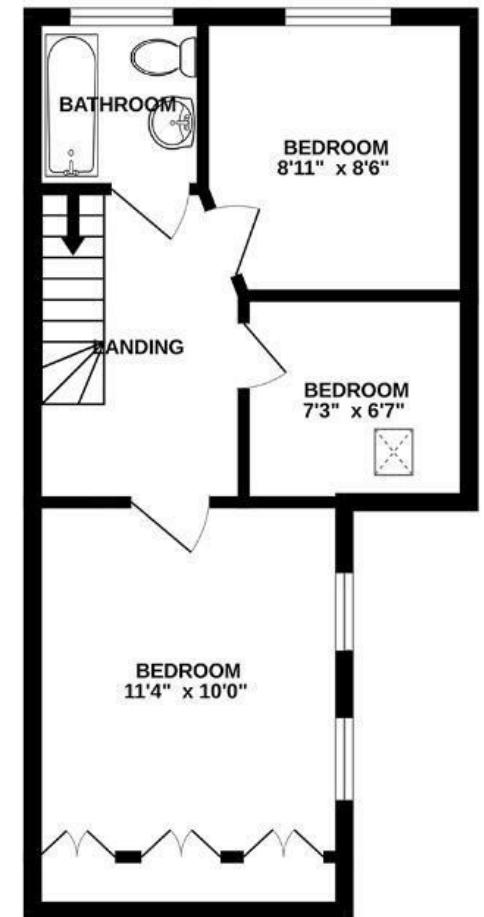
APPROXIMATE FLOOR AREA
65 SQM / SQFT 696



GROUND FLOOR



FIRST FLOOR



Boardwalk

Coach House

ST. GEORGE, BRISTOL



£350,000



BS5 8FD



3 Bedrooms



1 Bathrooms

"I have loved living in Coach House Lane over the past six years and will be sad to say goodbye. When coming home from work it has been so great to know that I have a space to park the car outside the front door and somewhere to store my bikes. The location is both tucked away and private, yet just a stone's throw from St George's Park. Also living in a detached house has been great being able to play music or have friends round without worrying about disturbing the neighbours. I'll really miss looking across the city skyline in the evening and seeing hot air balloons passing directly over the house. The local area has loads to offer and more shops, bars & restaurants keep popping up. Favourites include the Orchard café round the corner and the Red Church and Lock Up just down the road. When heading further afield then it's been great having a one-minute walk to catch the bus and head into town. I hope the next owners enjoy living here as much as I have."

